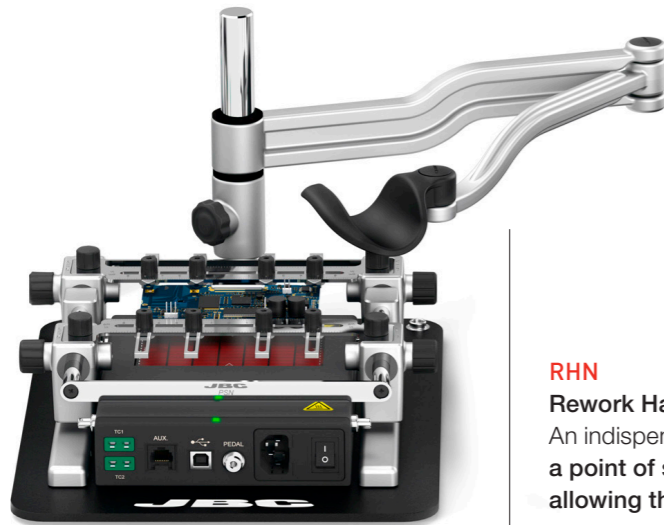


## PCB Preheater

The use of JBC Preheaters is **indispensable for rework on multi-layered PCBAs** and/or large ground planes **in order to avoid thermal shock** and facilitate soldering as well as desoldering processes. For an optimal result it is necessary to preheat the PCB and its components with controlled temperature profiles within the recommended limit values for each application. JBC Preheaters feature temperature profiles specially designed for this purpose and customizable according to need.



**RHN**  
**Rework Hand Support**  
An indispensable tool for precision work which **provides a point of support very close to the working zone**, allowing the stabilization of the pulse rate.

**PHNK**  
**Nano Preheater Set**  
The best solution for **rework on small PCBAs**, such as the ones commonly used in smartphones. It features a heating area of 108 x 70 mm / 4.25 x 2.75 in and two TC connections. Preheater can be operated easily and conveniently via the intuitive menu navigation and has **matchless reliability in temperature accuracy and control of the PCBA so that no component is damaged**. It features three work modes: **Power Mode** (working at a fixed power level), **Temperature Mode** (keeps PCBA at a selected temperature) and **Profile Mode** (allows control of the heating rate of the PCBA).

## PHNK Specifications

Dimensions (preheater unit)	179 x 165 x 41.5 mm / 7.04 x 6.5 x 1.63 in	Ambient Operating Temp.	10 - 50 °C / 50 - 122 °F
Weight (preheater unit)	1.2 Kg / 2.6 lb	Temperature Measurement	Thermocouple type K
Ref. - Voltage (AC)	<b>PHNE-9KA</b> - 100 V 50/60 Hz. Fuse: 4A.	JBC Set Temperature Profiles	3 profiles (2,3 or 4 steps)
	<b>PHNE-1KA</b> - 120 V 50/60 Hz. Fuse: 4A.	User Profiles	20 (up to 6 steps for each)
	<b>PHNE-2KA</b> - 230 V 50/60 Hz. Fuse: 2A.	Maximum Work Time	600 min or indefinite
Nominal Power	300 W		
Temperature Range	50 - 250 °C / 120 - 482 °F		



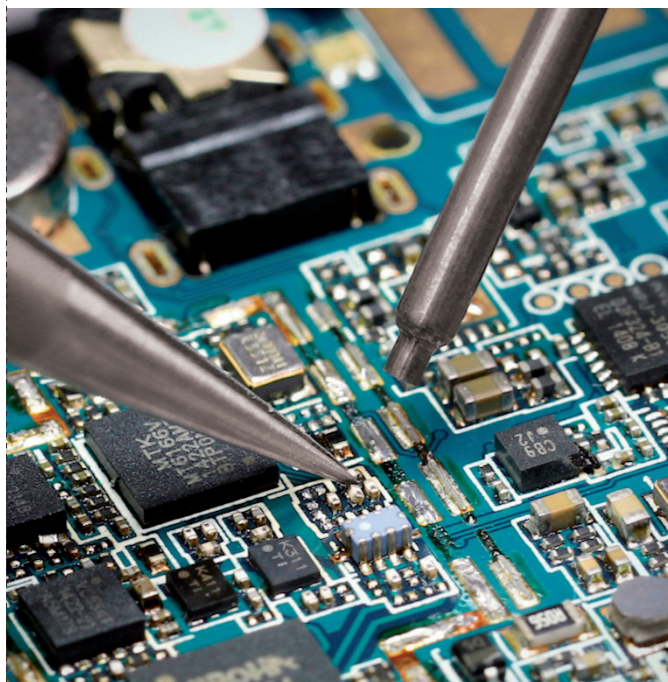
**JNA**

High-Precision Hot Air Station



# JNA High-Precision Hot Air Station

- ▶ **Easy, high-precision reworking** of SMT components (as small as 01005) under the magnifying glass.
- ▶ **Precise control** of temperature and air flow.
- ▶ Pick & Place to **position and remove** components with high precision.



**Intuitive menu**  
JNA Station has an intuitive menu that allows **setting up the station parameters easily.**



**Pedal**  
By means of P405 Pedal connection, the Heater Hose Set for hot air function and T260 Pick & Place Tool for suction function may be activated and deactivated.

### Auto-Start/Stop Function

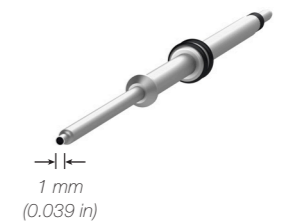
The tool is turned on when lifted from the stand, and the auto-stop function, as a safety measure, guarantees that the heat is automatically cut off when the tool is in the stand. **It is safer and more efficient.**

### Changing Heating Element

Save time and increase productivity by using NHS Stand, which facilitates **fast and safe use of the heating element.**

### Heating Element

J125010 Heating Element is perfect to rework the smallest SMDs from 01005 to SOIC-8 under the magnifying glass.



**Pick & Place**  
The station includes a Pick & Place functionality to position and remove components with **high precision.**



## JNA Specifications

Dimensions	180 x 170 x 110 mm / 7.1 x 6.7 x 4.3 in	Ambient Operating Temp.	10 - 50 °C / 50 - 122 °F
Weight	1.35 Kg / 2.96 lb	Cool Mode	Temp. off. Used to blow air at room temperature
Ref. - Voltage (AC)	JNASE-9A - 100 V 50/60 Hz. Main fuse: T2A. Rated current 0.85A	Connectors	USB-A / USB-B
	JNASE-1A - 120 V 50/60 Hz. Main fuse: T2A. Rated current 0.85A		RJ12 for RS232
	JNASE-2A - 230 V 50/60 Hz. Main fuse: T2A. Rated current 0.85A		Pedal / Stand
Nominal power	70 W	Air Flow Regulation	0.15 - 2.5 SLPM
Temperature selection	Room temp. / 150 - 450 °C / 300 - 840 °F	Vacuum	53% / 397 mmHg / 15.6 inHg